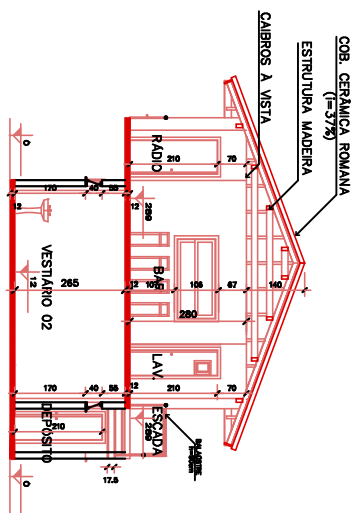
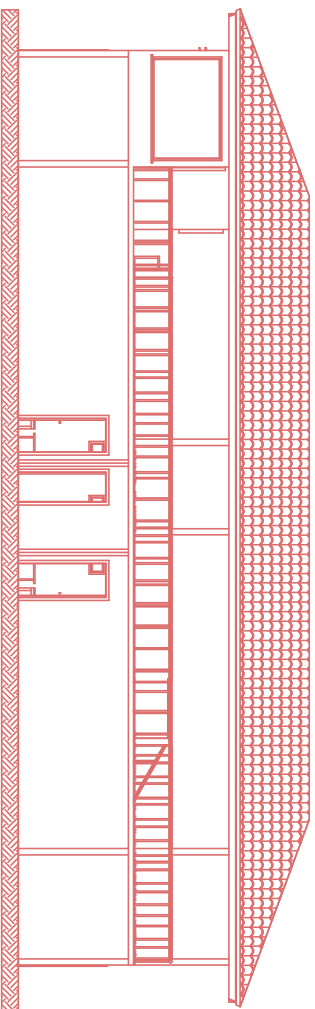


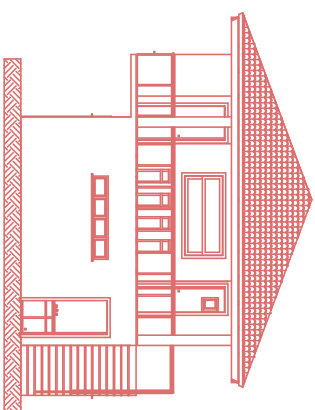
CORTE B - B'
Esc: 1/125



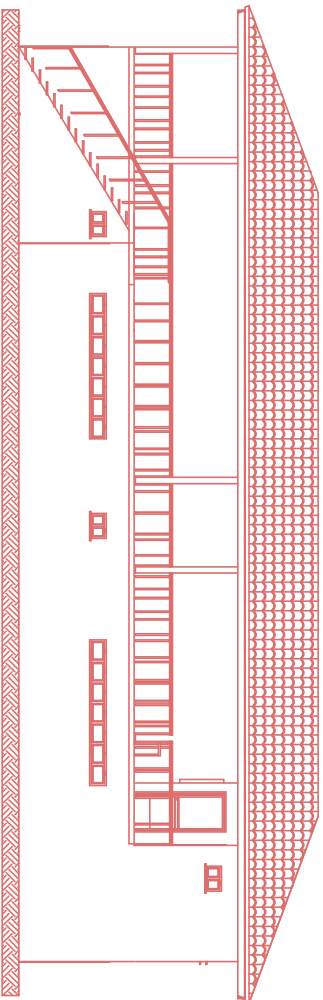
CORTE A - A'
Esc: 1/125



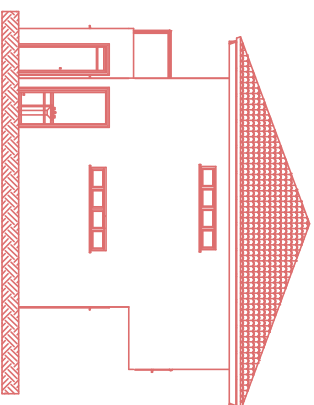
ELEVACÃO CAMPO FUTEBOL
Esc: 1/125



ELEVACÃO LATERAL
Esc: 1/125



ELEVACÃO FUNDOS
Esc: 1/125



ELEVACÃO LATERAL
Esc: 1/125

DIREITOS AUTORAIS RESERVADOS	
AUTORIZADO DO PRAZETO SOUZA - PRAZETO SEM ESTUÍO SEMPRE AUTORIZADO DO PRAZETO	
VESTIÁRIO ESTÁDIO MUNICIPAL	
CORTE A', CORTE B', CORTE C', ELEVACÃO FRONTAL, LATERAL, FUNDOS	
P.M. ARROIO TRINTA	
JEAN MARCELO ZERRO	
ARQ. JEAN	
MAIO/2011	
02	